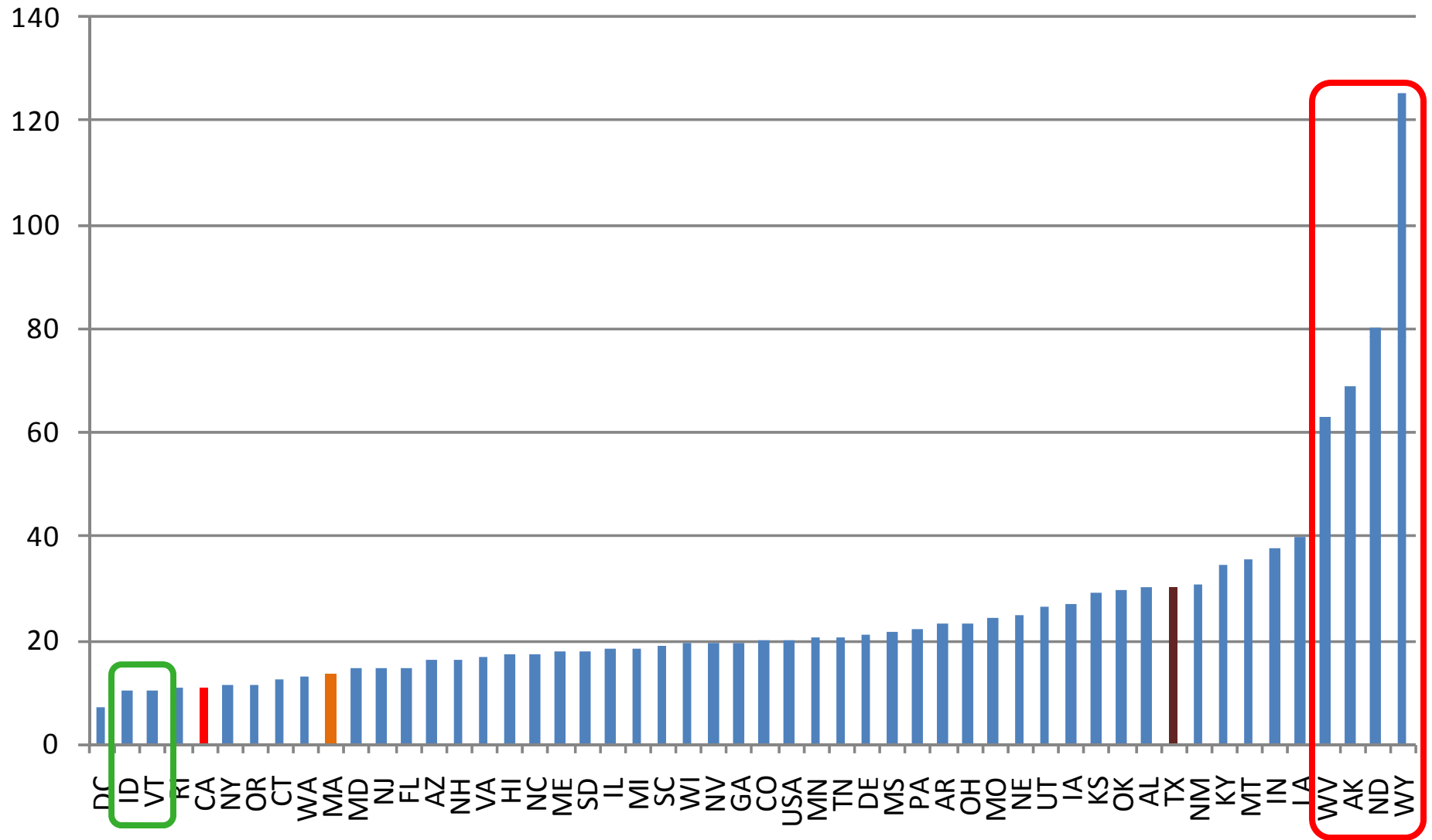


# Climate Benefits of the California Lifestyle: Interstate Differences in Carbon Emissions

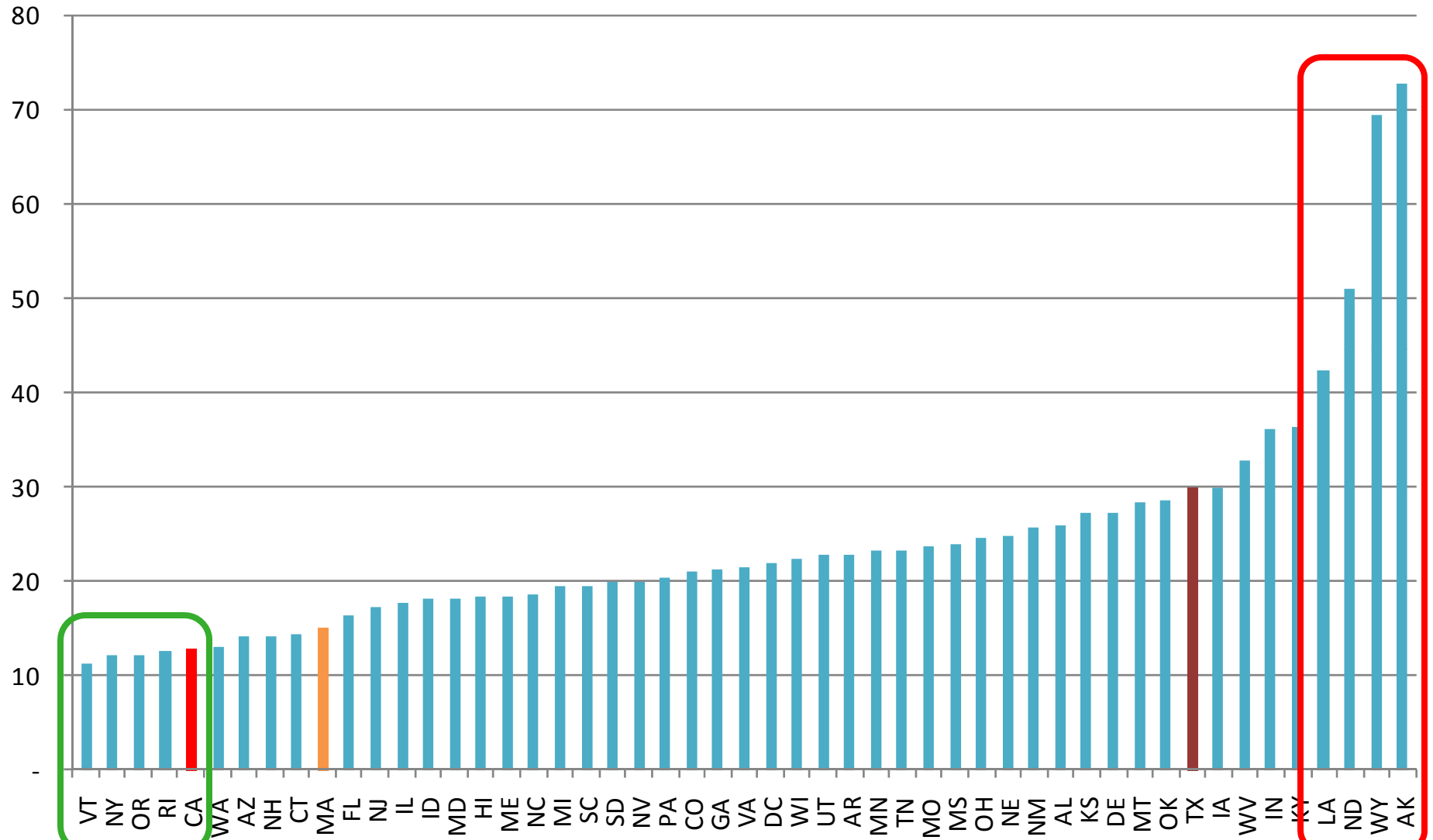
**December 5, 2008**

**Frank Ackerman  
SEI-US**

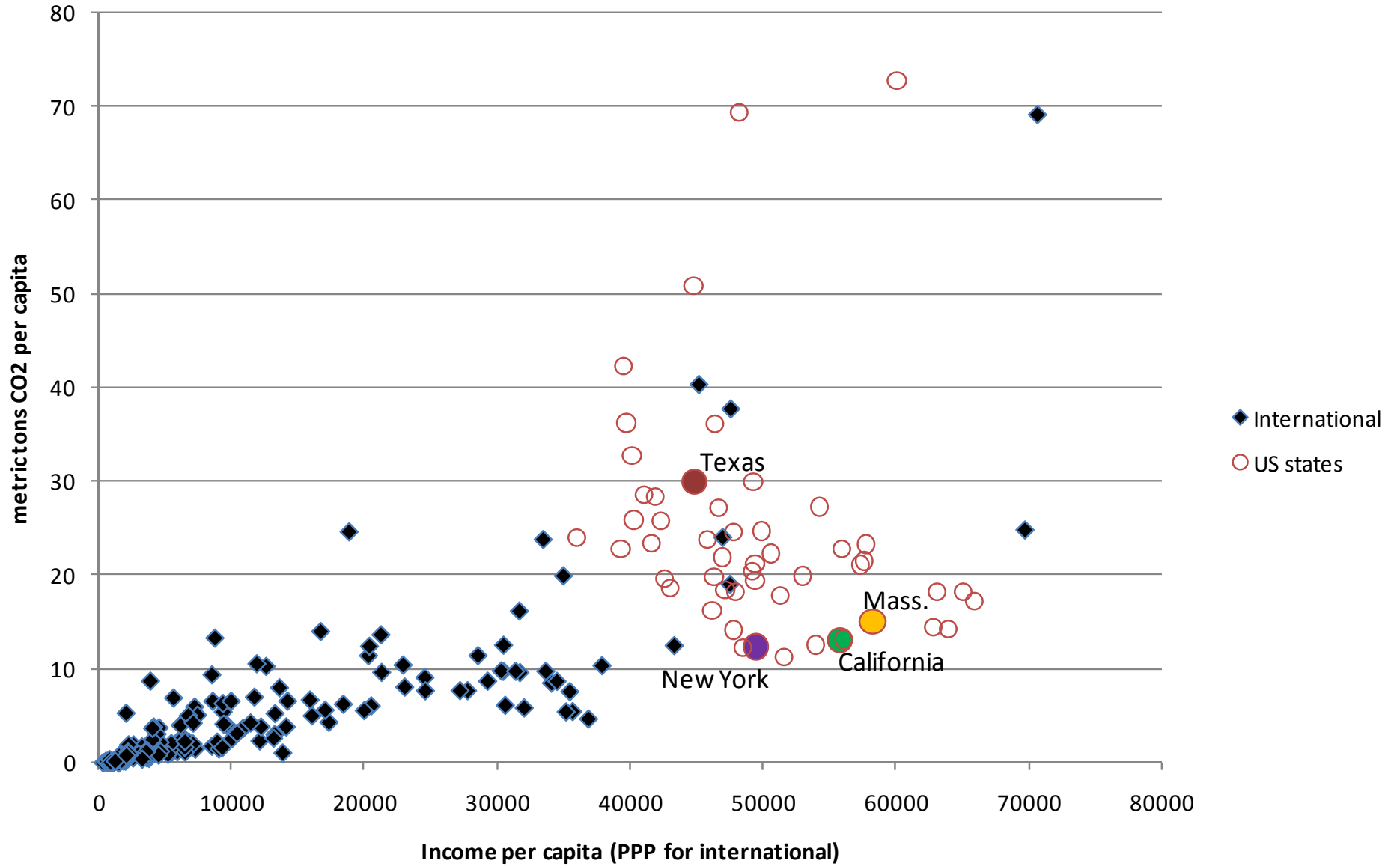
# Emissions per Capita (tons CO2/person)



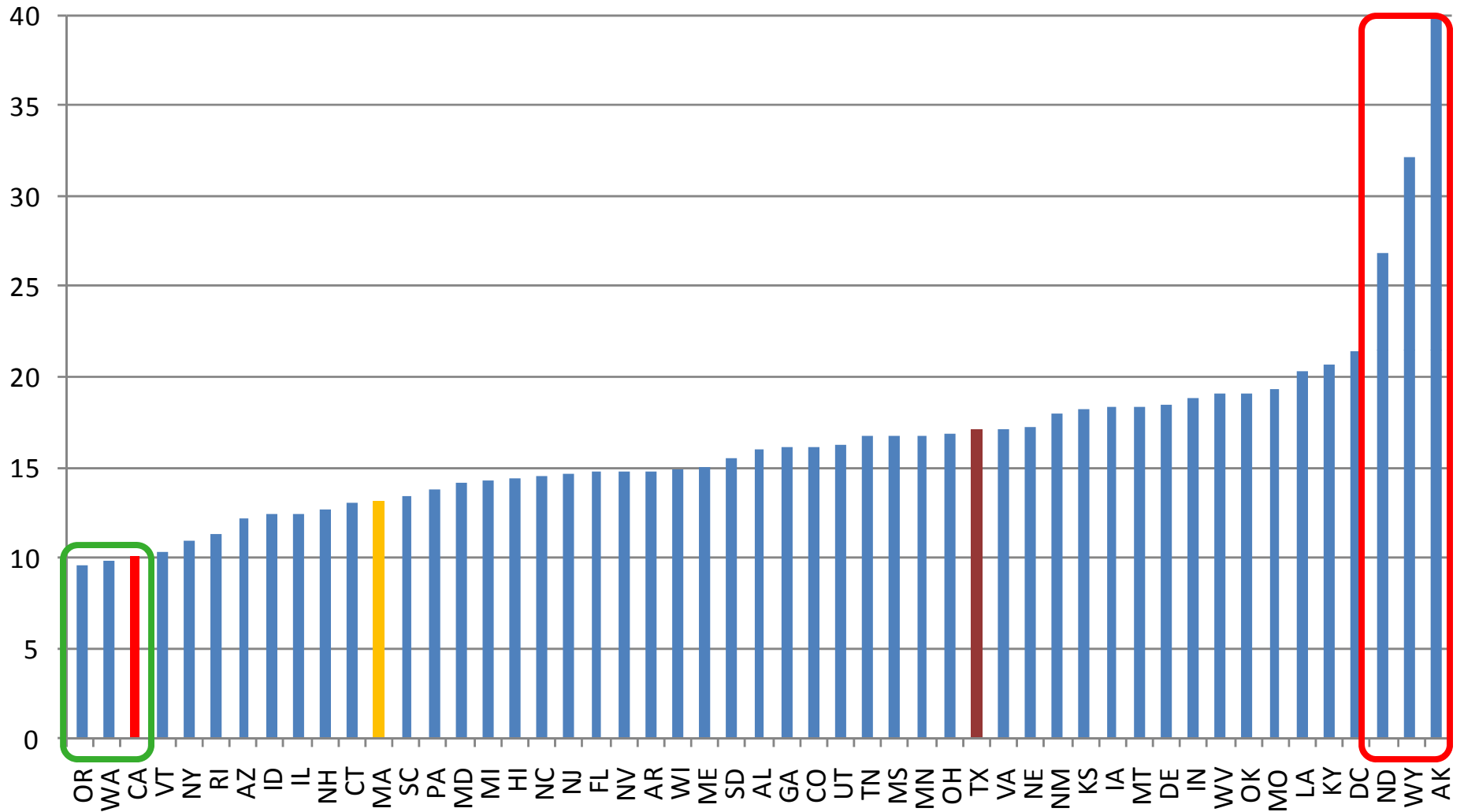
# Per capita emissions with electricity imports/exports



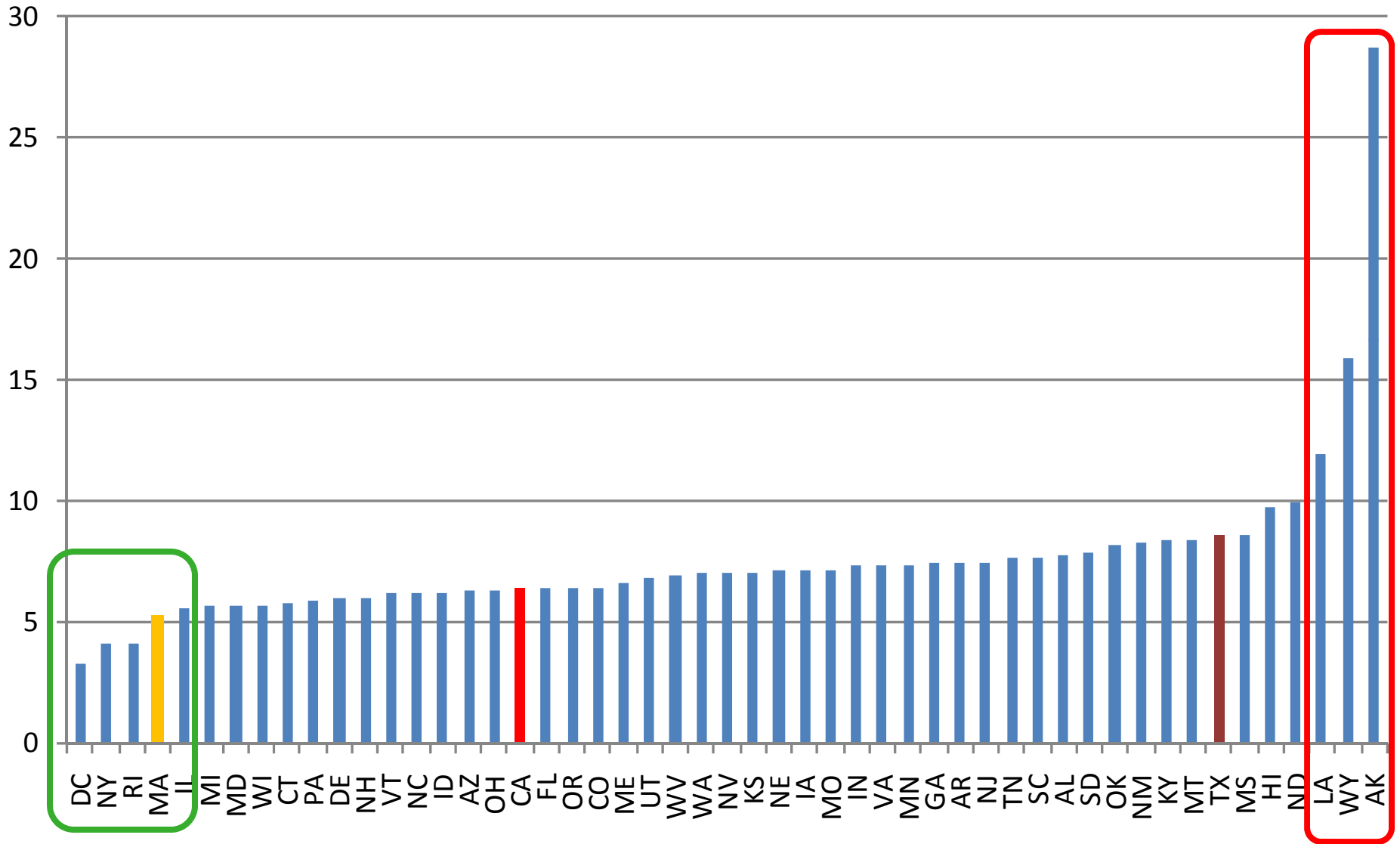
# US and international emissions vs income per capita



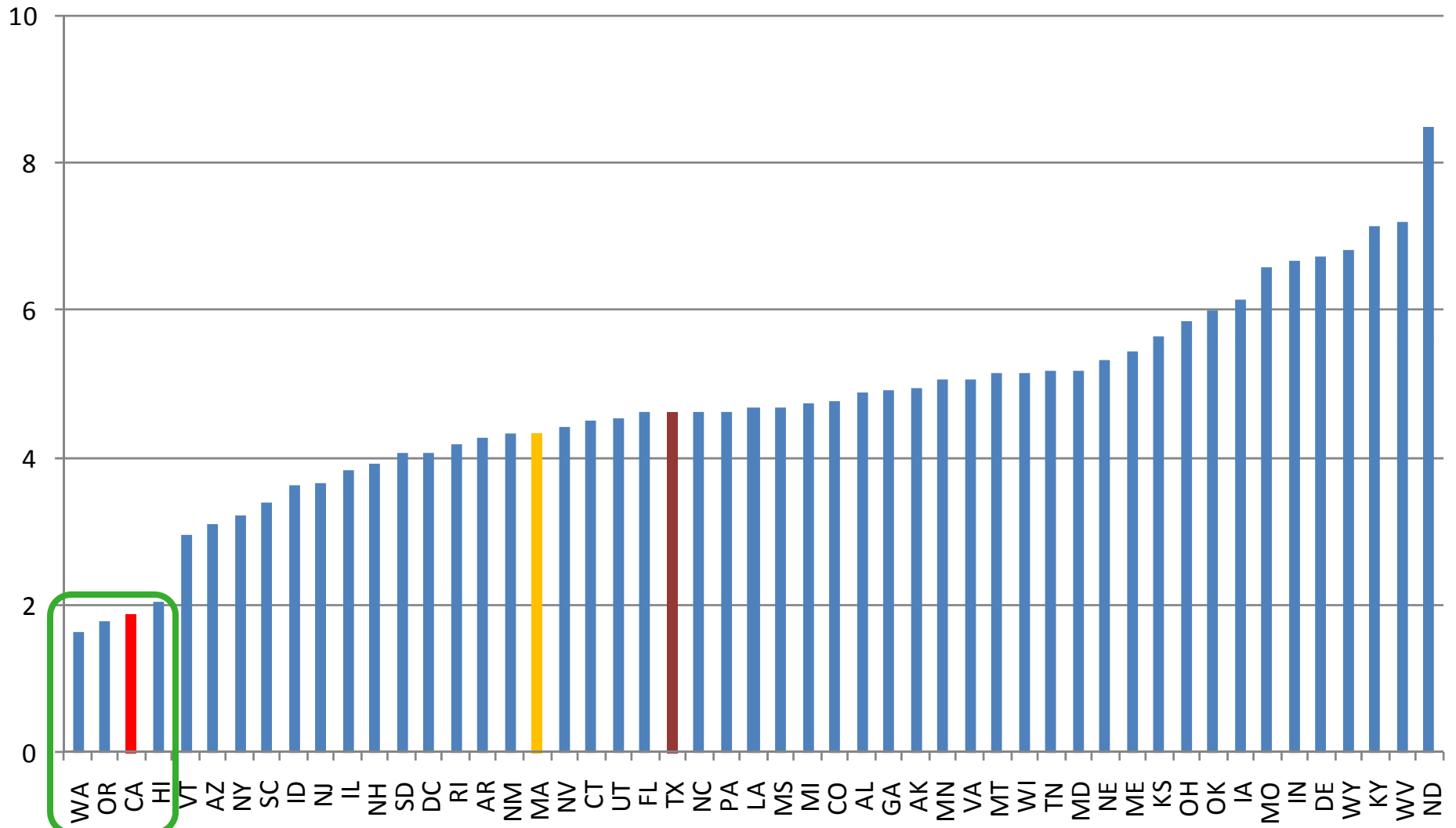
# Non-industrial per capita emissions



# Transportation emissions per capita



# Residential emissions per capita



# Statistical analysis of household emissions

## 1. Residential non-electricity emissions

More than half of interstate variation depends on temperature (i.e., heating emissions)

## 2. Transportation emissions

Vehicle miles traveled depends largely on density, urbanization  
Transportation emissions are *not* strictly proportional to vehicle miles – differing auto fleet efficiency by state??

## 3. Residential electricity use

Small effect of temperature (air conditioning)

Larger effect of fuel choice in power generation

State energy efficiency policies make a difference!

**- to be continued**